

## Contents



Quick Installation Guide x 1



Power Adapter x 1



Screw Kit x 1



RS485 Connector x 1



SATA Cable x 1



SATA Power Cable x 1

\* SATA cable, SATA power cable and RS485 connector are included in the HDVR.

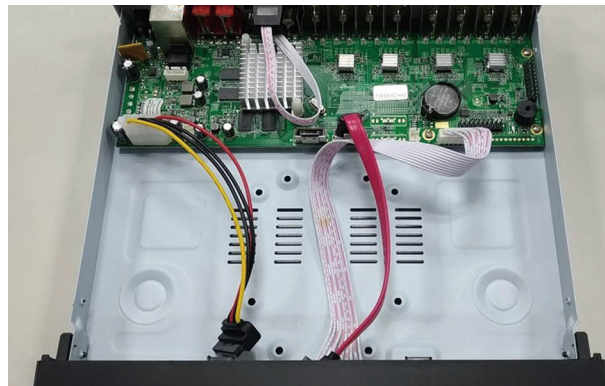
## Hard Disk Installation



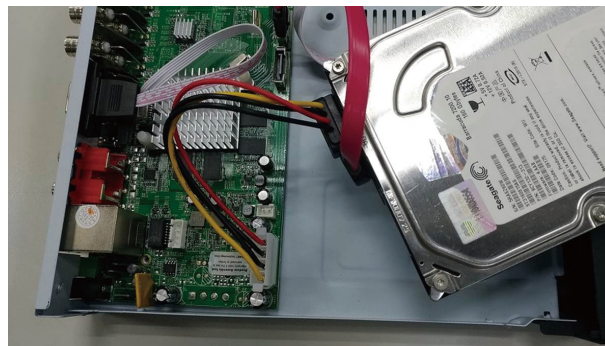
Caution

Before installing the HDD, please make sure there is no pre-configured partition in this HDD. If yes, please delete all the partitions before the installation.

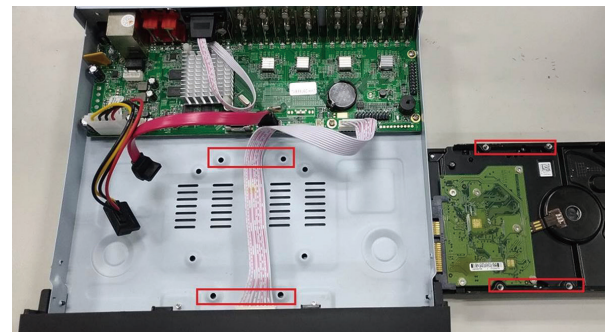
**Step 1:** Remove the upper case.



**Step 2:** Plug the HDD power cable and SATA cable into the slots of the PCBA board and the HDD, respectively, making sure the connections are well done.



**Step 3:** Please align the screw holes on the HDD with those on the HDVR case and secure them with the given screws.

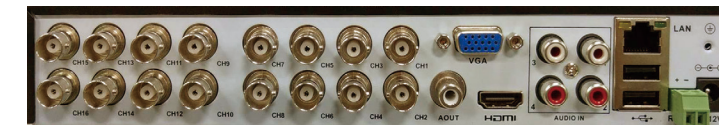


**Step 4:** After the HDD is secured, it should look like the one in the pictures (front and back) below:



## Hardware Connection

### HDVR-1635



### HDVR- 835



### HDVR-435

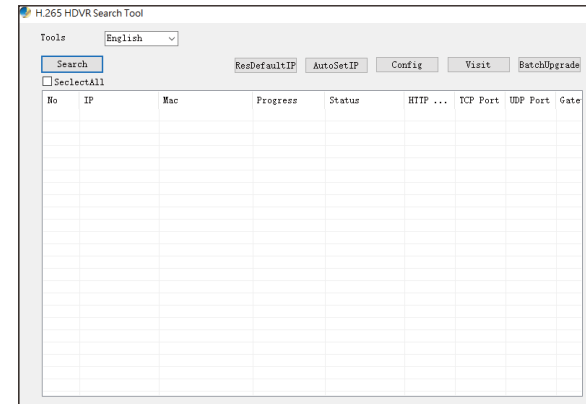


Name	Description
CH1-CH16	Composite video broadcast signal (CVBS) input interface
AUDIO IN 1-4	The input interface of the audio signal
AOUT/VOUT	The output interface of the audio/video signal
LAN	The network interface of RJ45
HDMI	The output interface of the HDMI video signal
VGA	The output interface of the VGA video signal
Power	12V DC, 2A
485+/485-	The interfaces of the alarm input, the alarm output and RS485

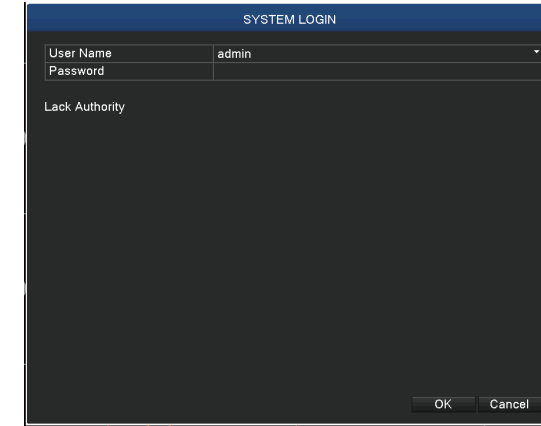
### Searching and Login

Please download and install the utility from the PLANET Web site (e.g. Appendix QC code) and launch it to search the HDVR. After clicking the Search, you can see the HDVR online. The HDVR should be located and its IP address should be displayed. Besides, you could select the required HDVR and click the Visit button to enter the Web UI of the HDVR.

<https://www.planet.com.tw/en/support/downloads?&method=keyword&keyword=HDVR%2035&view=6#list>



### System Login Window



### Web UI Login Window



To enter the main menu and set up the HDVR, the default IP address is 192.168.0.20. And both the default User Name and Password are **“admin”**.



For more detailed information, please refer to the user's manual on the PLANET website.

## H.265 4-/8-/16-ch 5-in-1 Hybrid Digital Video Recorder

▶ HDVR-435/HDVR-835/HDVR-1635

