

L3 Managed Ethernet Switch

GS-5220 Switch Series

Quick Installation Guide

Table of Contents

1. Package Contents	3
2. Requirements	5
3. Terminal Setup	6
3.1 Logging on to Console	7
3.2 Configuring IP Address.....	7
3.3 Storing Current Switch Configuration.....	9
4. Starting Web Management	10
4.1 Logging in to the Managed Switch	10
4.2. Saving Configuration via Web	13
5. Recovering Back to Default Configuration.....	14
6. Customer Support	15

1. Package Contents

Thank you for purchasing PLANET GS-5220 L3 Managed Ethernet Switch series. The descriptions of this series are shown below:

Model Name	Gigabit RJ45 Ports	Gigabit SFP Slots	10G SFP+ Slots	PoE Power Budget	Redundant Power System
GS-5220-16T4S2X	16	4	2	-	-
GS-5220-16T4S2XR	16	4	2	-	Yes
GS-5220-20T4C4X	24	4 combo	4	-	-
GS-5220-20T4C4XR	24	4 combo	4	-	Yes
GS-5220-24P4X	24	4 combo	4	400W	-
GS-5220-24P4XR	24	4 combo	4	400W	Yes
GS-5220-24PL4X	24	4 combo	4	600W	-
GS-5220-24PL4XR	24	4 combo	4	600W	Yes
GS-5220-48P4X	48	-	4	400W	-
GS-5220-48PL4XR	48	-	4	720W	Yes

“Managed Switch” is used as an alternative name in this Quick Installation Guide.

Open the box of the Managed Switch and carefully unpack it. The box should contain the following items:

- The Managed Switch
- Quick Installation Guide
- RJ45 to RS232 Cable
- Rubber Feet
- Two Rack-mounting Brackets with Attachment Screws
- Power Cord
- SFP Dust-proof Caps

Model	SFP Dust-proof Caps
GS-5220-16T4S2X	6
GS-5220-16T4S2XR	6
GS-5220-20T4C4X	8
GS-5220-20T4C4XR	8
GS-5220-24P4X	8
GS-5220-24P4XR	8
GS-5220-24PL4X	8
GS-5220-24PL4XR	8
GS-5220-48P4X	4
GS-5220-48PL4XR	4

If any item is found missing or damaged, please contact your local reseller for replacement.

2. Requirements

- Workstations running Windows 10/XP/2003/Vista/7/8/2008, MAC OS X or later, Linux, UNIX, or other platforms are compatible with TCP/IP protocols.
- Workstations are installed with Ethernet NIC (Network Interface Card)
- **Serial Port Connection** (Terminal)
 - The above Workstations come with COM Port (DB9) or USB-to-RS232 converter.
 - The above Workstations have been installed with **terminal emulator**, such as Hyper Terminal included in Windows XP/2003.
 - Serial cable -- one end is attached to the RS232 serial port, while the other end to the console port of the Managed Switch.
- **Ethernet Port Connection**
 - Network cables -- Use standard network (UTP) cables with RJ45 connectors.
 - The above PC is installed with Web browser and JAVA runtime environment plug-in.



Note

It is recommended to use Internet Explorer 8.0 or above to access the Managed Switch. If the Web interface of the Managed Switch is not accessible, please turn off the anti-virus software or firewall and then try it again.

3. Terminal Setup

To configure the system, connect a serial cable to a **COM port** on a PC or **notebook computer** and to **RJ45 type of serial port of the Managed Switch**.

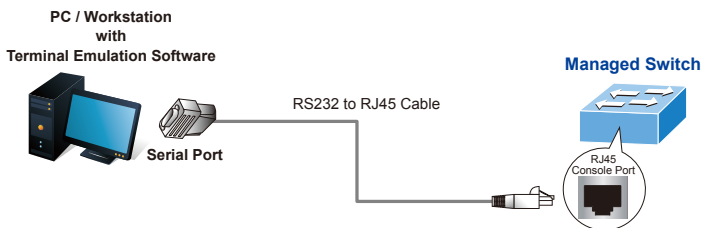


Figure 3-1 Managed Switch Console Connectivity

A terminal program is required to make the software connection to the Managed Switch.

1. 1. Run terminal program on the OS.
2. When the following screen appears, make sure that the COM port should be configured as:
 - ◆ Baud: 115200
 - ◆ Data bits: 8
 - ◆ Parity: None
 - ◆ Stop bits: 1
 - ◆ Flow control: None

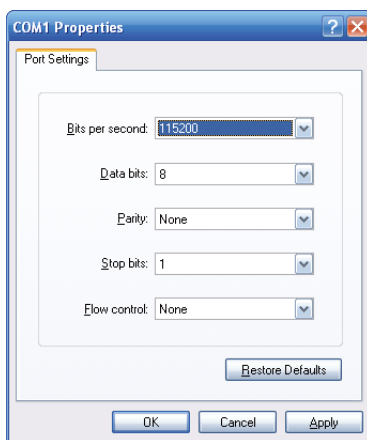


Figure 3-2 COM Port Configuration

3.1 Logging on to Console

Once the terminal is connected to the device, power on the Managed Switch and the terminal will display "running testing procedures".

Then, the following message asks to log in user name and password. The factory default user name and password are shown as follows and the login screen in Figure 3-3 appears.

```
Username: admin
Password: admin
```

```
Press ENTER to get started
Username: admin
Password:
GS-5220-24PL4XR# █
```

Figure 3-3: Managed Switch Console Login Screen

The user can now enter commands to manage the Managed Switch. For a detailed description of the commands, please refer to the following chapters.



Note

1. For security reason, please change and memorize the new password after this first setup.
2. Only accept command in lowercase letter under console interface.

3.2 Configuring IP Address

The Managed Switch is shipped with default IP address shown below.

```
IP Address: 192.168.0.100
Subnet Mask: 255.255.255.0
```

To check the current IP address or modify a new IP address for the Switch, please use the procedures as follows:

■ Show the current IP Address

1. At the “#” prompt, enter “**show ip interface brief**”.

```
GS-5220 Series # show ip interface brief
```

2. The screen displays the current IP address as shown in Figure 3-4.

```
GS-5220-24P4XR# show ip interface brief
Interface                Address                Method  Status
-----
VLAN 1                   192.168.0.100/24      Manual  DOWN
GS-5220-24P4XR# █
```

Figure 3-4: IP Information Screen

■ Configuring IP Address

3. At the “#” prompt, enter the following command and press **<Enter>** as shown in Figure 3-5.

```
GS-5220 Series# configure terminal
GS-5220 Series(config)# interface vlan 1
GS-5220 Series(config-if-vlan)# ip address 192.168.1.100 255.255.255.0
```

The previous command would apply the following settings for the Managed Switch.

```
IP Address: 192.168.1.100
Subnet Mask: 255.255.255.0
```

```
GS-5220-24P4XR# configure terminal
GS-5220-24P4XR(config)# interface vlan 1
GS-5220-24P4XR(config-if-vlan)# ip address 192.168.1.100 255.255.255.0
GS-5220-24P4XR(config-if-vlan)# █
```

Figure 3-5: Configuring IP Address Screen

4. Repeat step 1 to check if the IP address has changed.

4. Starting Web Management

The following shows how to start up the **Web Management** of the Managed Switch. Note the Managed Switch is configured through an Ethernet connection. Please make sure the manager PC must be set to the same **IP subnet address**.

For example, the default IP address of the Managed Switch is **192.168.0.100**, then the manager PC should be set to **192.168.0.x** (where x is a number between 1 and 254, except 100), and the default subnet mask is 255.255.255.0.

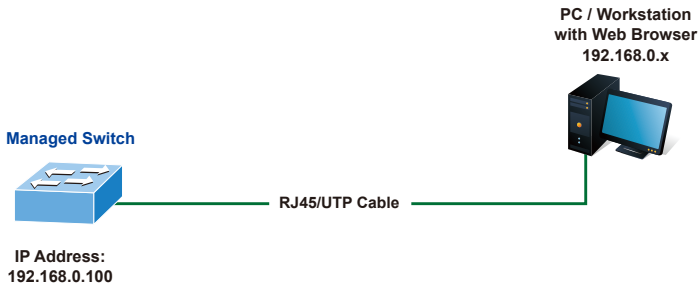


Figure 4-1: IP Management Diagram

4.1 Logging in to the Managed Switch

1. Use Internet Explorer 8.0 or above Web browser and enter IP address **<http://192.168.0.100>** (the factory default IP address or the one that you have just changed in console) to access the Web interface.
2. When the following dialog box appears, please enter the default user name and password "**admin**" (or the password you have changed via console). The login screen in Figure 4-2 appears.

Default IP Address: **192.168.0.100**

Default Username: **admin**

Default Password: **admin**

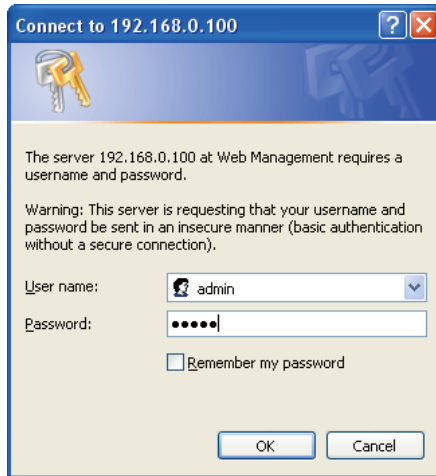


Figure 4-2: Login Screen

3. After entering the password, the main screen appears as Figure 4-3 shows.

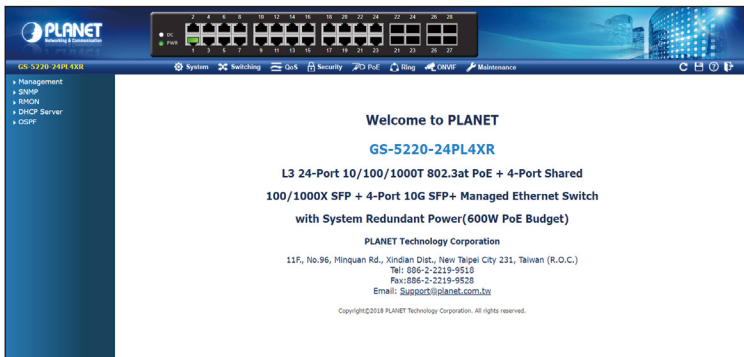


Figure 4-3: Web Main Screen of Managed Switch

The Switch Menu on the top and left of the Web page lets you access all the commands and statistics the Managed Switch provides.



- ▼ Management
 - ▶ System Information
 - ▶ IP Configuration
 - ▶ IP Status
 - ▶ Users Configuration
 - ▶ Privilege Levels
 - ▶ NTP Configuration
 - ▶ Time Configuration
 - ▶ UPnP
 - ▶ DHCP Relay
 - ▶ DHCP Relay Statistics
 - ▶ CPU Load
 - ▶ System Log
 - ▶ Detailed Log
 - ▶ Remote Syslog
 - ▶ SMTP Configuration
 - ▶ SNMP
 - ▶ RMON
 - ▶ DHCP Server

Figure 4-4: Switch Menu



Note

If you are not familiar with Switch functions or the related parameter, press **"Help icon"** anytime on the Web page to get the help description.

Now, you can use the Web management interface to continue the Switch management or manage the Switch by console interface.

Please refer to the user's manual for more.

4.2. Saving Configuration via Web

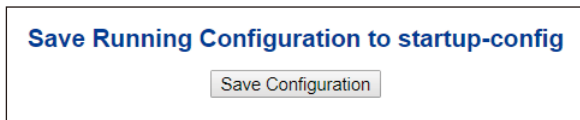
To save all applied changes and set the current configuration as a startup configuration, the startup-configuration file will be loaded automatically across a system reboot.

1. Click the **Save** icon on the top Switch Menu bar.

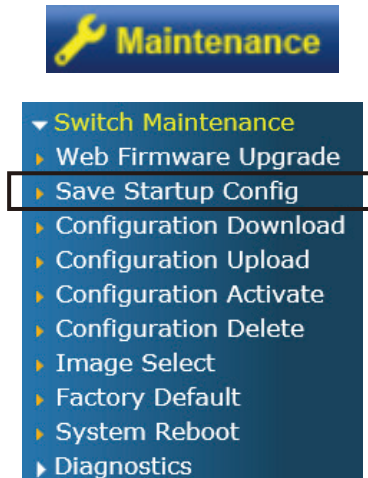


Figure 4-5: Save Config -- Hot key

2. Press the **"Save Configuration"** button.



3. Or the other way to save the setting is to click **Maintenance** and then **Save Startup Config**.



5. Recovering Back to Default Configuration

■ IP address has been changed or admin password has been forgotten –

To reset the IP address to the default IP address “192.168.0.100” or reset the login password to default value, press the hardware-based **reset button** on the rear panel for about **10 seconds**. After the device is rebooted, you can log in to the management Web interface within the same subnet of 192.168.0.xx.

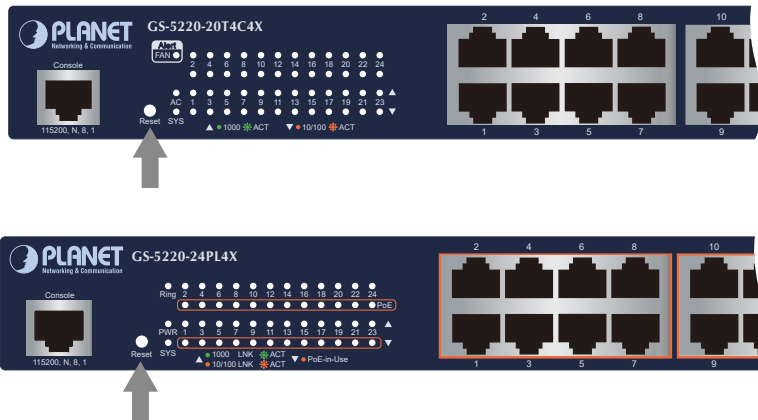


Figure 5-1: GS-5220-20T4C4X(R)/GS-5220-24PL4X(R) Reset Button

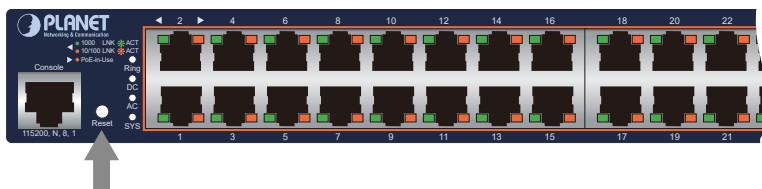


Figure 5-2: GS-5220-48PL4X(R) Reset Button

6. Customer Support

Thank you for purchasing PLANET products. You can browse our online FAQ resource and User's Manual on PLANET Web site first to check if it could solve your issue. If you need more support information, please contact PLANET switch support team.

PLANET online FAQs:

<http://www.planet.com.tw/en/support/faq>

Switch support team mail address:

support@planet.com.tw

GS-5220 Series User's Manual:

<http://www.planet.com.tw/en/support/downloads?method=category&c1=&p=&type=3>



(Please select your switch model name from the drop-down menu of Product Model.)

Copyright © PLANET Technology Corp. 2020.

Contents are subject to revision without prior notice.

PLANET is a registered trademark of PLANET Technology Corp.

All other trademarks belong to their respective owners.

