

The guide contains the basic information you need to quickly set up the camera.

For detailed information on installations or operations, please refer to the user manual on PLANET web site (<http://planet.com.tw/en/support/download.php>).

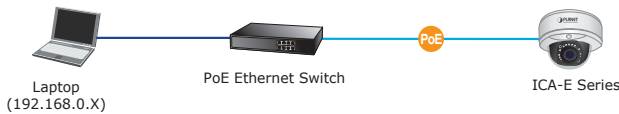


Step 1: Unpack the Camera

Check the camera package and make sure all the items are present. The complete package list is shown in the user manual in Chapter 1.

Step 2: Connecting Network and PoE

Basic connection example:

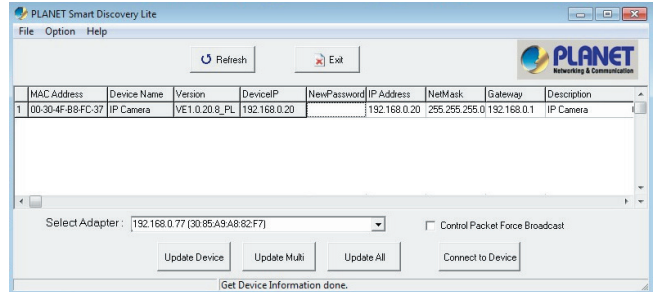


You can check the details of a PoE network infrastructure under Product Introduction in the user manual in Chapter 1.

- 1 -

Step 3: Running Installer Utility to Locate the IP Camera

- ◆ Download camera search tool: **Smart Discovery Lite utility** from the Download Center of our website (<http://planet.com.tw/en/support/download.php?view=8184&key=ICA-E#list>).
- ◆ Run **Smart Discovery Lite utility** to start searching for cameras.
After the Smart Discovery Lite utility is launched, all ICA-E camera series found in your local area network will be displayed.



- 2 -

Step 4: Opening the Web Management

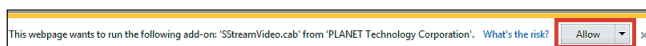
- ◆ Select the IP camera you want to configure and input its IP address into the browser search bar.



For full functionality, it is recommended to use Microsoft IE browser 11.

- ◆ Please enter **“admin”** as the default user name and password, as shown below:

- ◆ When the device is logged on for the first time, the browser will prompt a message; please click **“Allow”** to install controls.



- 3 -



If IE9 or higher version browser is used, it is suggested that the PLANET camera web link should be added as a trusted site.

Appendix A: Default Setting

Default DHCP Client	On
Default IP Address	192.168.0.20 – if DHCP does not exist in the network
Default Login User Name	admin
Default Login Password	admin
Search Tools	Smart Discovery Lite

- 4 -

www.PLANET.com.tw

PoE IP Camera with Extended Support

▶ ICA-E Series



PLANET Technology Corp.
10F., No. 96, Minquan Rd., Xindian Dist., New Taipei City 231, Taiwan
2011-AB8100-001



Appendix B: Extended Software Introduction

PLANET provides the following software to match with ICA-E camera series. With these software, user is able to analyze video, and even recognize vehicle license plate.

CV7-VA: <https://www.planet.com.tw/en/support/download.php?&method=keyword&keyword=CV7-VA&view=6#list>

CV7-VA is a payware of video analytics that is designed to transform your video surveillance network into a smart detection system.

CV7-LP: <https://www.planet.com.tw/en/support/download.php?&method=keyword&keyword=CV7-LP&view=6#list>

CV7-LP is a payware of video analytics that is designed to detect and recognize vehicle license plates.

Utility	User's Manual
	

Further Configuration

For detailed configuration, please refer to user manual downloadable from the web site. (<http://www.planet.com.tw/en/support/download.php>).

If you have any other question, please contact the dealer where you purchased this product or you can contact PLANET directly at the following email address: support_ica@planet.com.tw