

**Layer 3 12-Port 10G SFP+ + 8-Port 10/100/1000T
Managed Switch with Dual 100~240V AC Redundant Power**

XGS-6350-12X8TR

Quick Installation Guide

Table of Contents

1. Package Contents	3
2. Switch Management.....	4
3. Requirements	5
4. Terminal Setup	6
4.1 Logon to the Console.....	7
4.2 Configuring IP Address.....	7
4.3 Setting 100BASE-TX for Gigabit Ethernet Port	9
4.4 Setting 1000BASE-X for SFP+ Port.....	9
4.5 Changing Password.....	10
4.6 Saving the Configuration	10
5. Starting Web Management	11
5.1 Logging in to the Managed Switch	12
5.2 Saving Configuration via the Web	13
6. Recovering Back to Default Configuration.....	14
7. Customer Support	15

1. Package Contents

Thank you for purchasing PLANET Layer 3 12-Port 10G SFP+ + 8-Port 10/100/1000T Managed Switch, XGS-6350-12X8TR.

Unless specified, "**Managed Switch**" mentioned in this Quick Installation Guide refers to the XGS-6350-12X8TR.

Open the box of the **Managed Switch** and carefully unpack it. The box should contain the following items:

- The Managed Switch x 1
- Quick Installation Guide x 1
- RJ45-to-DB9 Console Cable x 1
- Power Cord x 2
- Rubber Feet x 4
- Two Rack-mounting Brackets with Attachment Screws x 6
- SFP Dust Cap x 12 (installed on the machine)

If any item is found missing or damaged, please contact your local reseller for replacement.

2. Switch Management

To set up the Managed Switch, the user needs to configure the Managed Switch for network management. The Managed Switch provides two management options: **Out-of-Band Management** and **In-Band Management**.

■ Out-of-Band Management

Out-of-band management is the management through console interface. **Generally, the user will use out-of-band management for the initial switch configuration**, or when in-band management is not available.



Important

The Managed Switch is shipped with IP address 192.168.0.254/24 assigned by default. User can assign another IP address to the Managed Switch via the console interface to be able to remotely access the Managed Switch through Telnet or HTTP.

■ In-Band Management

In-band management refers to the management by logging in to the Managed Switch using Telnet or HTTP, or using SNMP management software to configure the Managed Switch. In-band management enables the management of the Managed Switch to attach some devices to the Switch. The following procedures are required to enable in-band management:

1. Logon to console
2. Assign/Configure IP address
3. Create a remote login account
4. Enable HTTP or Telnet server on the Managed Switch

In case in-band management fails due to Managed Switch configuration changes, out-of-band management can be used for configuring and managing the Managed Switch.

3. Requirements

- Workstations running Windows XP/2003/Vista/2008/7/8/10, MAC OS X or later, Linux, UNIX, or other platforms are compatible with TCP/IP protocols.
- Workstations are installed with Ethernet NIC (Network Interface Card)
- Serial Port Connection (Terminal)
 - The above Workstations come with COM Port (DB9) or USB-to-RS232 converter.
 - The above Workstations have been installed with terminal emulator, such as Tera Term or PuTTY.
 - Serial cable -- one end is attached to the RS232 serial port, while the other end to the console port of the Managed Switch.
- Ethernet Port Connection
 - Network cables -- Use standard network (UTP) cables with RJ45 connectors.
 - The above PC is installed with Web browser and JAVA runtime environment plug-in.



Note

It is recommended to use Internet Explorer 8.0 or above to access the Managed Switch. If the Web interface of the Managed Switch is not accessible, please turn off the anti-virus software or firewall and then try it again.

4. Terminal Setup

To configure the system, connect a serial cable to a **COM port** on a PC or notebook computer and to serial (console) port of the Managed Switch. The console port of the Managed Switch is DCE already, so that you can connect the console port directly through PC without the need of Null Modem.

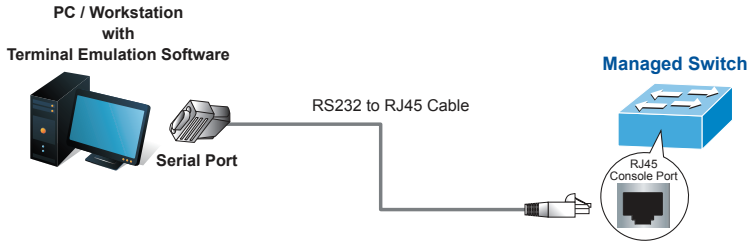


Figure 4-1 Managed Switch Console Connectivity

A terminal program is required to make the software connection to the Managed Switch. Tera Term program may be a good choice. The Tera Term can be accessed from the **Start** menu.

1. Click **START** menu, then **Programs**, and then **Tera Term**.
2. When the following screen appears, make sure that the COM port should be configured as:

- Baud: 9600
- Parity: None
- Data bits: 8
- Stop bits: 1
- Flow control: None

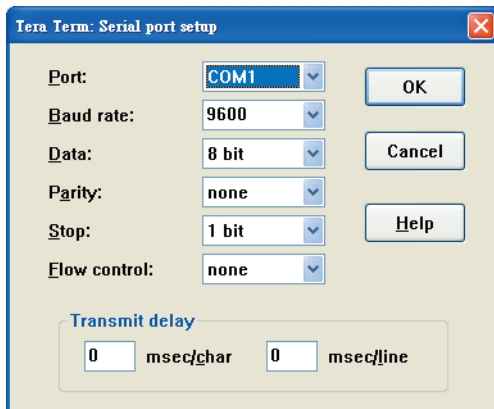


Figure 4-2 Tera Term COM Port Configuration

4.1 Logon to the Console

Once the terminal is connected to the device, power on the Managed Switch, and the terminal will display “**running testing procedures**”.

Then, the following message asks for the login user name and password. The factory default user name and password are as follows as the login screen in Figure 4-3 appears.

```
Username: admin  
Password: admin
```

```
User Access Verification  
  
Username: admin  
Password:  
Switch>enable  
Switch#
```

Figure 4-3 Managed Switch Console Login Screen

The user can now enter commands to manage the Switch. For a detailed description of the commands, please refer to the following chapters.



Note

1. For security reason, please change and memorize the new password after this first setup.
2. Accept command in lowercase or uppercase letter under console interface.

4.2 Configuring IP Address

The IP address configuration commands for VLAN1 interface are listed below. Before using in-band management, the Managed Switch must be configured with an IP address by out-of-band management (i.e. console mode). The configuration commands are as follows:

```
Switch#config  
Switch(config)#interface vlan 1  
Switch(config-if-Vlan1)#ip address 192.168.1.254 255.255.255.0
```

The previous command would apply the following settings for the Managed Switch.

IPv4 Address: 192.168.1.254

Subnet Mask: 255.255.255.0

```
Switch#config
Switch_config#interface vlan1
Switch_config_v1#ip address 192.168.1.254 255.255.255.0
Switch_config_v1#
Switch_config_v1#
Switch_config_v1#
```

Figure 4-4 Configuring IPv4 Address Screen

To check the current IP address or modify a new IP address for the Managed Switch, please use the procedures as follows:

■ Show the current IP address

1. On "**Switch#**" prompt, enter "**show ip interface brief**".
2. The screen displays the current IP address, subnet mask and gateway as shown in Figure 4-5.

```
Switch#config
Switch_config#interface vlan1
Switch_config_v1#ip address 192.168.1.254 255.255.255.0
Switch_config_v1#
Switch_config_v1#
Switch_config_v1#
Switch_config_v1#exit
Switch_config#show ip interface brief
Interface          IP-Address      Method Protocol-Status
Null0              unassigned     manual up
VLAN1              192.168.1.254  manual up
Switch_config#
```

Figure 4-5 Showing IP Information Screen

If the IP is successfully configured, the Managed Switch will apply the new IP address setting immediately. You can access the Web interface of Managed Switch through the new IP address.



Note

If you are not familiar with console command or the related parameter, enter "**help**" anytime in console to get the help description.

4.3 Setting 100BASE-TX for Gigabit Ethernet Port

The Managed Switch supports both **1000BASE-T** and **100BASE-TX** by manual setting and the default Ethernet port speed is set to 1000Mbps. To establish the UTP connection with 100BASE-TX, the following command configuration is required:

```
Switch#config
Switch_config#interface gigabitEthernet 0/1
Switch_config_g0/1#speed 100
Switch_config_g0/1#exit
Switch_config#interface range gigabitEthernet 0/2-8
Switch_config_if_range#speed 100
Switch_config_if_range#
```

```
Switch#config
Switch_config#interface gigabitEthernet 0/1
Switch_config_g0/1#speed 100
Switch_config_g0/1#exit
Switch_config#interface range gigabitEthernet 0/2-8
Switch_config_if_range#speed 100
Switch_config_if_range#
```

Figure 4-6 Setting 100BASE-TX Screen

4.4 Setting 1000BASE-X for SFP+ Port

The Managed Switch supports both **1000BASE-X** and **10GBASE-X** SFP transceivers by manual setting and the default SFP+ port speed is set to 10Gbps. For example, to establish the fiber connection with 1000BASE-X SFP transceiver in the **tgigabitEthernet 1/1**, the following command configuration is required:

```
Switch#config
Switch_config#interface tgigabitEthernet 1/1
Switch_config_tg1/1#speed 1000
Switch_config_tg1/1#exit
Switch_config#interface range tgigabitEthernet 1/2-12
Switch_config_if_range#speed 1000
Switch_config_if_range#
```

```
Switch#config
Switch_config#interface tgigaethernet 1/1
Switch_config_tg0/1#speed 1000
Switch_config_tg0/1#exit
Switch_config#interface range tgigaethernet 1/2-12
Switch_config_if_range#speed 1000
Switch_config_if_range#
```

Figure 4-7 Setting 1000BASE-FX Screen

4.5 Changing Password

The default password of the switch is "admin". For security reason, it is recommended to change password and the following command configuration is required:

```
Switch#config
Switch_config#username admin password planet2017
Switch_config#
```

```
Switch#config
Switch_config#username admin password planet2017
Switch_config#|
```

Figure 4-8 Changing Password Interface Screen

4.6 Saving the Configuration

In Managed Switch, the running configuration file stores in the RAM. In the current version, the running configuration sequence running-config can be saved from the RAM to FLASH by write command, so that the running configuration sequence becomes the start-up configuration file, which is called configuration save.

```
Switch#write
```

```
Switch#write
Saving current configuration..
OK!
Switch#Jan 5 00:45:12 /startup-config is wrote. TID:87172682
Switch#|
```

Figure 4-9 Write Screen

5. Starting Web Management

The Managed Switch provides a built-in browser interface. You can manage it remotely by having a remote host with Web browser, such as Microsoft Internet Explorer, Mozilla Firefox, Google Chrome or Apple Safari.

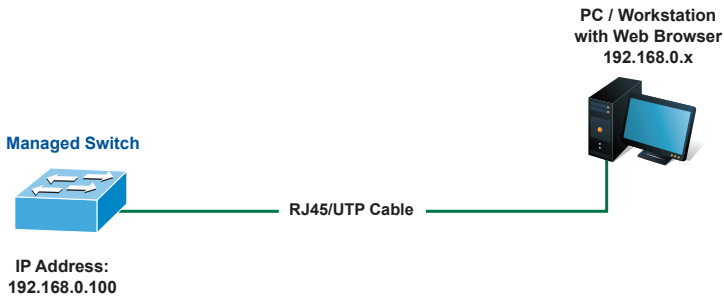


Figure 5-1 IP Management Diagram

The following shows how to start up the **Web Management** of the Managed Switch. Please note the Managed Switch is configured through an Ethernet connection. Please make sure the manager PC must be set to the same **IP subnet address**.

For example, the IP address of the Managed Switch is configured with **192.168.0.254**, then the manager PC should be set to **192.168.0.x** (where x is a number between 1 and 253, except 100), and the default subnet mask is 255.255.255.0.

The factory default user name and password are as follows:

Default IP: **192.168.0.254**
Username: **admin**
Password: **admin**

5.1 Logging in to the Managed Switch

1. Use Internet Explorer 8.0 or above Web browser and enter IP address **http://192.168.0.254** (that you have just set in console) to access the Web interface.
2. When the following dialog box appears, please enter the configured username **"admin"** and password **"admin"** (or the username/password you have changed via console). The login screen in Figure 5-2 appears.



Figure 5-2 Login Screen

3. After entering the password, the main screen appears as shown in Figure 5-3.

The screenshot shows the web interface of a Planet Managed Switch. The top header features the Planet logo (a globe with a person silhouette) and the text "PLANET Networking & Communication". To the right of the logo are links: "Save All | English | 中文 | Logout | About". Below the header is a "Device Info" section. On the left is a navigation menu with categories: "Device Status", "Basic Config", "Port Config", "L2 Config", "L3 Config", "Advanced Config", "Network Mgr.", "Diagnostic Tool", and "System Mgr.". Under "Device Status", "Device Info" is selected. The main content area is titled "System Information" and contains a table with the following data:

Device Type	XGS-6350-12X8TR
BIOS Version	0.4.3
Firmware Version	2.2.0B Build 47532
Serial No.	20014013899
MAC Address	A8:F7:E0:03:00:01
IP Address	192.168.0.254
Current Time	1970-1-11 4:8:59
Uptime	10 Day -4 Hour -8 Minute -59 Second
CPU Usage	2%
Memory Usage	16%

At the bottom of the table is a "Refresh" button.

Figure 5-3 Web Main Screen of Managed Switch

4. The Switch Menu on the left of the Web page lets you access all the commands and statistics the Switch provides.

Now, you can use the Web management interface to continue the Switch management or manage the Managed Switch by console interface. Please refer to the user manual for more.

5.2 Saving Configuration via the Web

The configuration area is to show the content that is selected in the navigation area. The configuration area always contains one or more buttons, such as "Refresh", "Apply" and "Reset".

The "Apply" button indicates applying the modified configuration to the device. The application of the configuration does not mean that the configuration is saved in the configuration file. To save the configuration, you have to click **"Save All"** on the top control bar. **"Save All"** function is equivalent to the execution of the **write** command.

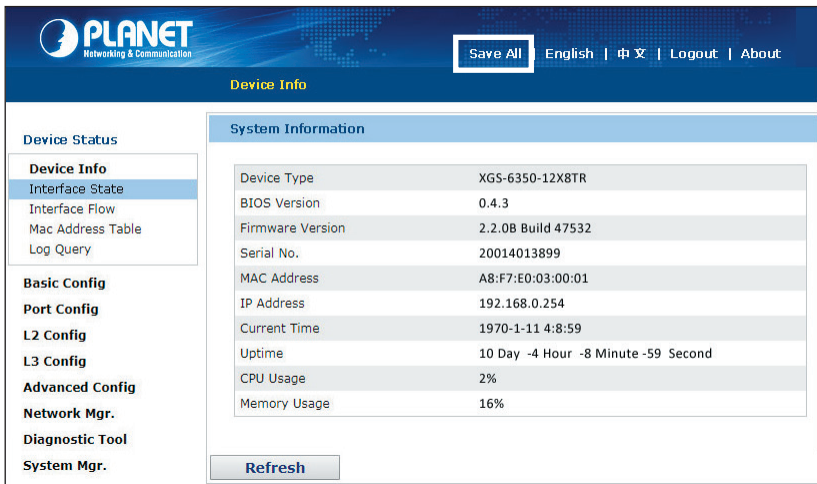


Figure 5-4 Save configuration

6. Recovering Back to Default Configuration

■ IP address has been changed or admin password has been forgotten

To reset the IP address to the default IP address **"192.168.0.254"** or reset the login password to default value, press the hardware **reset button** on the front panel for about **5 seconds**. After the device is rebooted, you can login the management Web interface within the same subnet of 192.168.0.xx.

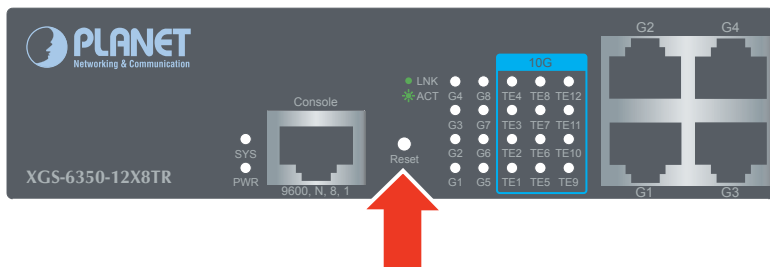


Figure 6-1 XGS-6350-12X8TR Reset Button

7. Customer Support

Thank you for purchasing PLANET products. You can browse our online FAQ resource at the PLANET Web site first to check if it could solve your issue. If you need more support information, please contact PLANET switch support team.

PLANET online FAQs:

<http://www.planet.com.tw/en/support/faq.php?type=1>

Switch support team mail address:

support_switch@planet.com.tw

XGS-6350-12X8TR User's Manual

<http://www.planet.com.tw/en/support/download.php?view=3&key=XGS-6350-12X8TR#list>



Copyright © PLANET Technology Corp. 2017.

Contents are subject to revision without prior notice.

PLANET is a registered trademark of PLANET Technology Corp. All other trademarks belong to their respective owners.

