

1. Package Contents

Thank you for choosing PLANET Outdoor Wireless AP. Before installing, please verify the contents inside the package box. The device mentioned herein is the brief name of the "Outdoor Wireless AP".

WDAP-1800AX	Quick Guide	L-type Bracket x 1
		
Screw Set x 1	U-bolt Kit x 2	RJ45 Waterproof Kit x 1
		

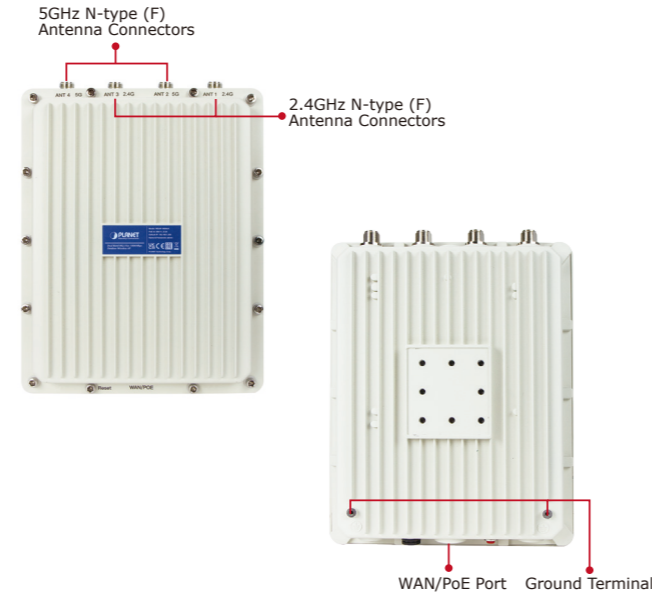


If there is any item missing or damaged, please contact the seller immediately.

- 1 -

2. Physical Introduction

Hardware Description



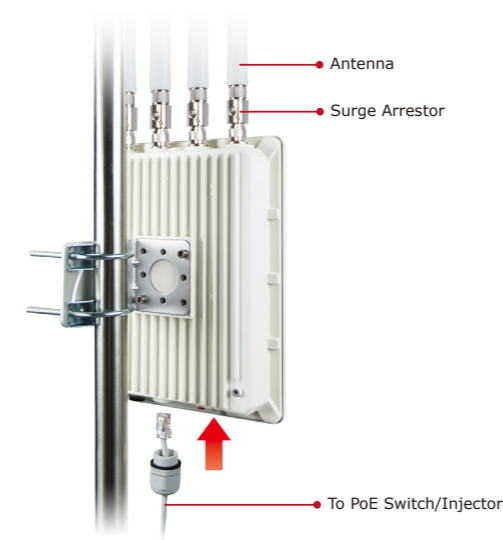
- 3 -

Step 2: (1) Attach the surge arrestors to each antenna connector.

(2) Attach the antenna equipped with N-type (M) connector to each surge arrester. Otherwise, connect the antenna through the N-male (male pin) to N-male (male pin) cable.

(3) Plug the RJ45 Ethernet cable into the PoE port of the AP through the waterproof kit, and plug the other side of the RJ45 cable into the PoE port of the PoE switch to finish the installation.

* Please remember to finish grounding by consulting the local electrical experts.



- 5 -

5. Entering into the Web Management

Default IP Address: **192.168.1.253**
 Default Username and Password: **admin**
 Default 2.4GHz SSID: **Planet_2.4G**
 Default 5GHz SSID: **Planet_5G**

Step 1: The Web management allows you to access and manage the wireless AP easily. Launch the Web browser and enter the default IP address <http://192.168.1.253>.



Step 2: When the login window pops up, please enter username and password. The default username and password are "admin". Then click the "Sign in" button to continue.



- 7 -

IMPORTANT SAFETY PRECAUTIONS:

- LIVES MAY BE AT RISK!** Please be aware of the electrical wires around. Carefully read the section "OUTDOOR INSTALLATION WARNING" in the manual before installation.
- Users **MUST complete grounding wired** with the device; otherwise, a sudden lightning could cause fatal damage to the device. **EMD (Lightning) DAMAGE IS NOT COVERED UNDER WARRANTY.**
- Users **MUST** power off the device first before connecting the antenna to it; otherwise, damage might be caused to the device itself.
- The Antenna and Surge Arrester are required for each antenna connector, and must be purchased separately.



Caution

- 2 -

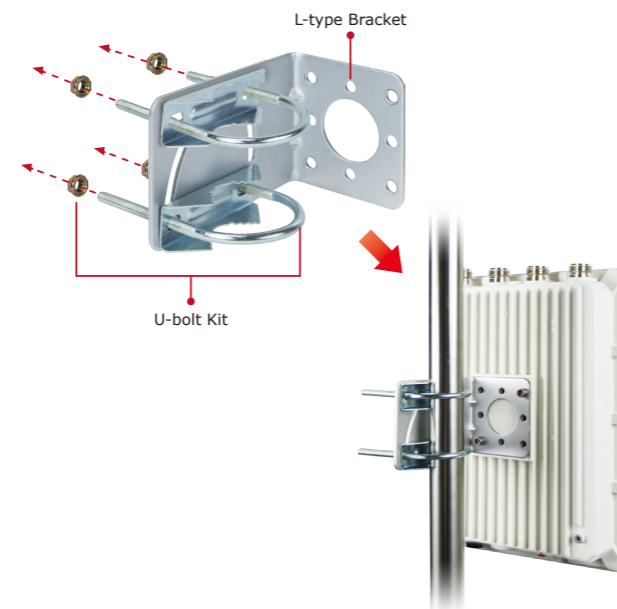
3. Hardware Installation

Step 1: (1) Install the backplane to the back of the AP.

(2) Attach the L-type bracket to the backplane and fasten it.

(3) Place the AP to the pole and fasten it with the U-bolt kit.

* The AP can be mounted on the pole with a diameter of up to 2.5".

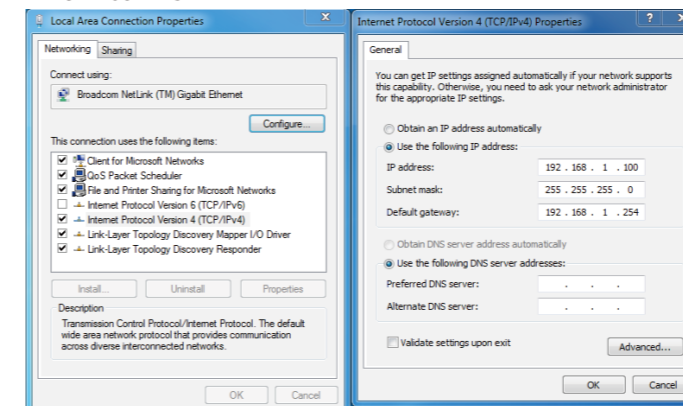


- 4 -

4. Wired Network Configuration (Windows 7 and Windows 10)

A computer with wired Ethernet connection is required for the first-time configuration of the wireless AP.

- Click the "Start" button located at the lower-left corner of your computer.
- Click "Control Panel".
- Double-click the "Network and Sharing Center" icon.
- Click "Change adapter settings".
- Double-click "Local Area Connection".
- Select "Internet Protocol Version 4 (TCP/IPv4)" and click "Properties".
- Select "Use the following IP address" and then click the "OK" button twice to save the configuration. For example, the default IP address of the WDAP-1800AX is 192.168.1.253 and the router is 192.168.1.254. You may choose from 192.168.1.1 to 192.168.1.252.



- 6 -

Step 3: Please follow the wizard to do the first-time setup and select the mode preferred.



- 8 -

6. Wireless Network Connection

Step 1: Right-click on the **network icon** displayed in the system tray.



Step 2: Highlight the wireless network (SSID) to connect and click the **[Connect]** button.



Step 3: Enter the **encryption key** of the WDAP-1800AX if necessary.

If you have already finished the configuration of the WDAP-1800AX, you can use your smart phone, tablet, laptop, or any other Wi-Fi device to connect with it wirelessly and start surfing the internet.

- 9 -

7. AP Discovery through PLANET NMS Controller (NMS-500/NMS-1000V)

The WDAP-1800AX is the Smart AP series which can be centrally managed by PLANET NMS Controller.

Follow the steps below to discover the managed AP through PLANET NMS controller (NMS-500/NMS-1000V). Please ensure each managed AP uses a different static IP in the same subnet before physically connecting to the managed network.



Please regularly check PLANET website for the latest compatible list of the controller/managed APs in each firmware version.

Step 1: Launch the Web browser (Google Chrome is recommended.) and enter the default IP address <https://192.168.1.100:8888> of the NMS controller. Then, enter the default username and password **"admin"** to log on to the system.

* The secure login with SSL (HTTPS) prefix is required



- 10 -

Step 2: Go to the "Domain" page to discover and add the managed AP to the device list. Then, you can go to the "AP Control-> AP Management" page to configure pre-defined profiles to the managed AP without logging on to the AP's web page.

For information about further configuration of Managed AP by using PLANET Smart AP Control, refer to the configuration guide to the NMS controller (NMS-500/NMS-1000V).

- 11 -

Further Information:

The above steps introduce the simple installations and configurations of the device. For further configurations, please refer to the user manual, which can be downloaded from the website.

WDAP-1800AX

<https://www.planet.com.tw/en/support/downloads?&method=keyword&keyword=WDAP-1800AX&view=3#list>



PLANET Network Management Solution (NMS):

<https://www.planet.com.tw/en/products/network-management>

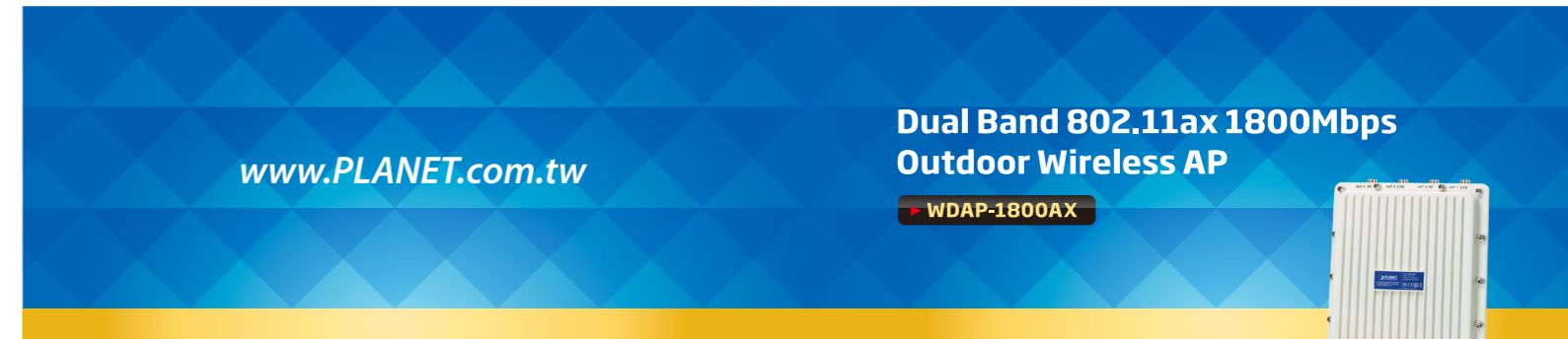


If you have further questions, please contact the local dealer or distributor where you purchased this product.

- 12 -



Quick Guide



PLANET Technology Corp.

10F., No. 96, Minquan Rd., Xindian Dist., New Taipei City 231, Taiwan

2011-E10770-000

Warning:
This device is compliant with Class A of CISPR 32.
In a residential environment this device may cause radio interference.



Energy Saving Note of the Device
This power required device does not support Standby mode operation. For energy savings, please remove the DC plug or slide the hardware-based Power Switch to the OFF position to disconnect the device from the power circuit. Without removing the DC plug from or switching off the device, the device will still consume power from the power source. In view of Saving the Energy and reducing the unnecessary power consumption, it is strongly suggested to power off or to remove the DC plug from the device if this device is not intended to be active.