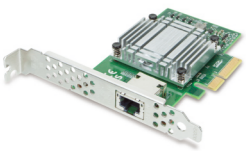




Quick Installation Guide

Thank you for purchasing PLANET ENW-9803 10GBASE-T PCI Express Server Adapter. It supports x4 PCI Express interfaces. The ENW-9803 provides a highly cost-effective solution that can upgrade your existing Ethernet infrastructure to the 10 Gigabit network.

1. Package Contents

- 1 x ENW-9803 (with long profile bracket)
- 1 x Quick Installation Guide
- 1 x Low Profile Bracket

ENW-9803	Quick Installation Guide
	
Low Profile Bracket	
	

2. System Requirement

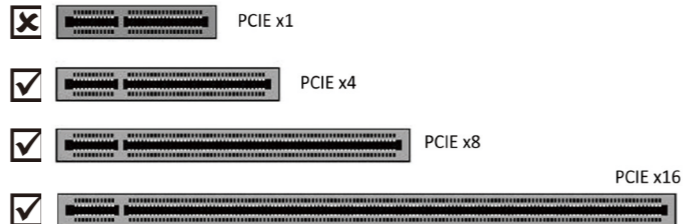
■ PCI-Express support

ENW-9803: The Server/Workstation supports PCI Express v3.0 (8GT/s) and PCI Express (PCIe) x4 interface.



Note

Below are the different PCI Express Slots. The ENW-9803 is compatible with PCIe 2.0 x4 slots or larger.

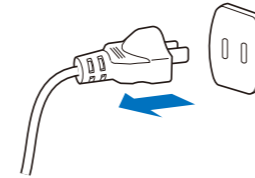


■ Operation System Support:

- Windows Server 2008R2 64 bits
- Windows Server 2012R2 64 bits
- Windows Server 2016R2 64 bits
- Windows Server 2019R2 64 bits
- Windows 7 32/64 bits
- Windows 8 32/64 bits
- Windows 10 32/64 bits
- Linux Stable Kernel Version (2.6.32.x to 5.x)
- Linux CentOS/RHEL (6.x to 7.x)
- VMware ESX/ESXi 4.x/5.x/6.x

3. Hardware Installation

Step 1: Please turn off your PC.

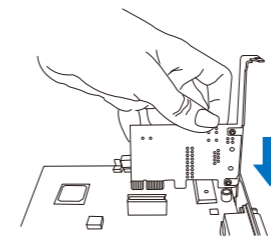


Step 2: Remove any metal decorations from your hands and wrists.

Step 3: Remove the cover from your PC.

Step 4: Locate an empty PCI Express slot and remove the corresponding back plate. Save the screw for use in Step 6.

Step 5: Carefully insert the 10 Gigabit Ethernet Adapter into the chosen slot and press firmly with proper push to ensure it is fully seated in the slot.



Step 6: Secure the 10 Gigabit Ethernet Adapter with the screw you saved in Step 4.

Step 7: Replace the PC cover.

Step 8: Power on your PC and refer to the next section to install driver.

4. Installation on Windows 10

Before installing drivers of ENW-9803 server adapter, please visit PLANET ENW-9803 web pages to download the drivers for your operation system.

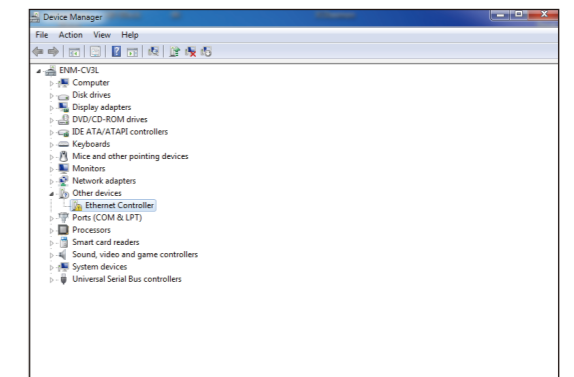
<https://www.planet.com.tw/en/support/downloads?&method=keyword&keyword=ENW-980&view=4#list>



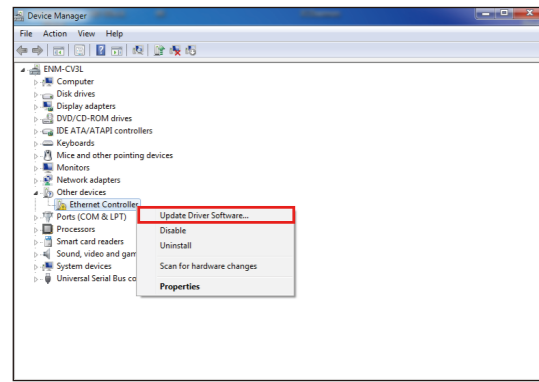
Note

1. For Windows 10 and other Windows-based operation system, the operation system will detect server adapter and install driver automatically. However, if driver is not installed successfully, you have to install driver manually.
2. This operation uses Win10 which it is similar to Win7/8/Windows Server 2008/Windows Server 2012/Windows Server 2016/Windows Server 2019.

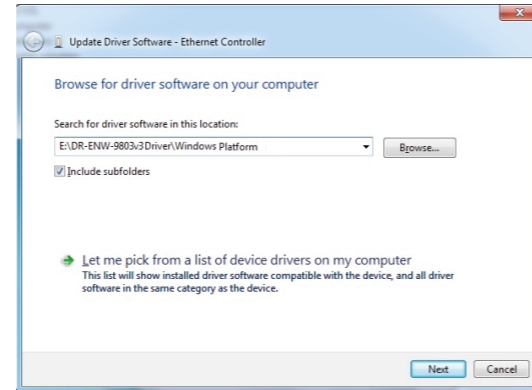
1. After installing the ENW-9803 to your PC and booting it up, Windows 10 will detect it and you have to install driver.



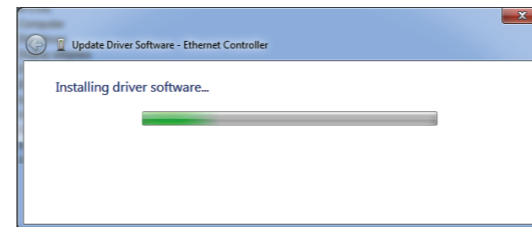
2. Please move and right-click the mouse button for Ethernet Controller item and select "Update Driver Software".



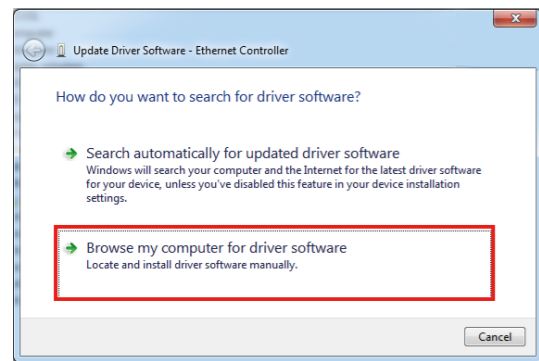
4. Please click "Browse" to specify the driver location to install. Click "Next" to continue.



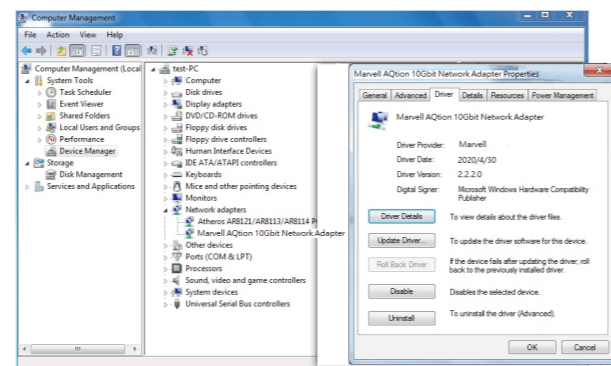
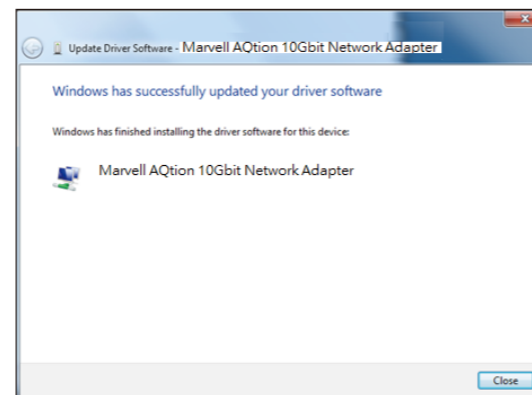
The driver is being installed.



3. Please select "Browse my computer for driver software" for the next step.



5. Click the "Close" button to complete the driver installation.



5. LED Indicators

LED	Color	Description
Link Speed	Green	Indicates the link is established at 10Gbps full duplex mode.
	Orange	Indicates the link is established at 100Mbps/1G/2.5G/5G mode.
LNK/ACT	Green	When it lights, it indicates a functional network link through the port. When it blinks fast, it indicates data is being transmitted and received through the port.

Customer Support

Thank you for purchasing PLANET products. You can browse our online FAQ resource and User's Manual on PLANET Web site first to check if it could solve your issue. If you need more support information, please contact PLANET support team.

PLANET online FAQs:
<http://www.planet.com.tw/en/support/faq>

Support team mail address:
support@planet.com.tw

ENW-9801v3 and ENW-9803v3 User's Manual:
<https://www.planet.com.tw/en/support/downloads?&method=keyword&keyword=ENW-980&view=3#list>

