

**Industrial L3 20-Port 10/100/1000T +
4-Port Gigabit TP/SFP + 4-Port 10G SFP+
Managed Ethernet Switch**

IGS-6325-20T4C4X

Quick Installation Guide

Table of Contents

1. Package Contents	3
2. Requirements	4
3. Wiring DC Power Inputs	5
4. Terminal Setup	6
4.1. Logging on to Console	7
4.2. Configuring IP Address via Console	8
5. Starting Web Management	10
5.1 Logging in to the Industrial Managed Switch.....	10
5.2. Saving Configuration via Web	13
6. Recovering Back to Default Configuration.....	15
7. Customer Support	16

1. Package Contents

Thank you for purchasing PLANET Industrial L3 Managed Ethernet Switch. **“Industrial Managed Switch”** is used as an alternative name in this Quick Installation Guide.

Open the box of the Industrial Managed Switch and carefully unpack it. The box should contain the following items:

- The Industrial Managed Switch x 1
- Quick Installation Guide x 1
- DB9 to RJ45 Interface RS232 Console Cable x 1
- Rubber Feet x 4
- Rack Mount Accessory Kit x 1
- AC Power Cord x 1
- SFP Dust Cap x 8
- RJ45 Dust Cap x 25

If any item is found missing or damaged, please contact your local reseller for replacement.

2. Requirements

The Industrial Managed Switch provides remote login interface for management purposes. The following equipment is necessary for further management:

- Workstations running Windows 10/XP/2003/Vista/7/8/2008, MAC OS X or later, Linux, UNIX, or other platforms are compatible with TCP/IP Protocols.
- Workstations are installed with Ethernet NIC (Network Interface Card)
- Serial Port Connection (Terminal)
 - The above Workstations come with COM Port (DB9) or USB-to-RS232 converter.
 - The above Workstations have been installed with terminal emulator, such as Hyper Terminal included in Windows XP/2003, putty or Tera Term.
 - Serial cable -- one end is attached to the RS232 serial port, while the other end to the console port of the Industrial Managed Switch.
- Ethernet Port Connection
 - Network cables -- Use standard network (UTP) cables with RJ45 connectors.
 - The above PC is installed with Web browser and JAVA runtime environment plug-in.



Note

It is recommended to use Internet Explore 8.0 or above to access the Industrial Managed Switch. If the Web interface of the Industrial Managed Switch is not accessible, please turn off the anti-virus software or firewall and then try it again.

3. Wiring DC Power Inputs

The 6-contact terminal block connector on the panel of Industrial Managed Switch is used for two DC redundant powers input. Please follow the steps below to insert the power wires.

1. Insert positive/negative DC power wires into contacts 1 and 2 for DC POWER 1, or 5 and 6 for DC POWER 2.

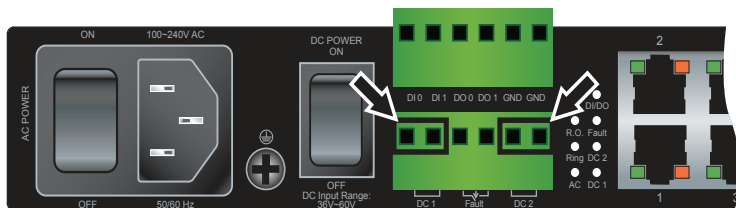


Figure 3-1 6-contact terminal block connector

2. Tighten the wire-clamp screws for preventing the wires from loosening.

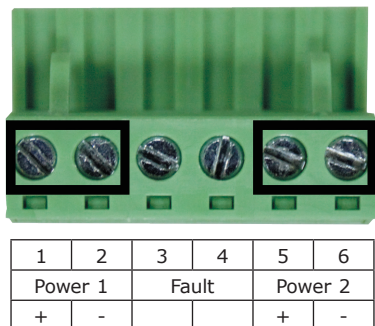


Figure 3-2 The pin of 6-contact terminal block connector



The wire gauge for the terminal block should be in the range between 12 and 24 AWG.

4. Terminal Setup

To configure the system, connect a serial cable to a COM port on a PC or notebook computer and to RJ45 type of serial port of the Industrial Managed Switch.

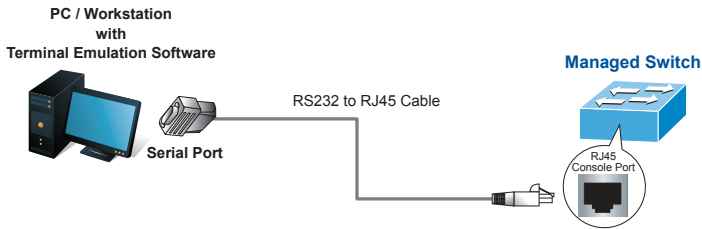


Figure 4-1 Industrial Managed Switch Console Connectivity

A terminal program is required to make the software connection to the Industrial Managed Switch.

1. Run terminal program on the OS.
2. When the following screen appears, make sure that the COM port should be configured as:
 - ◆ Baud: 115200
 - ◆ Data bits: 8
 - ◆ Parity: None
 - ◆ Stop bits: 1
 - ◆ Flow control: None

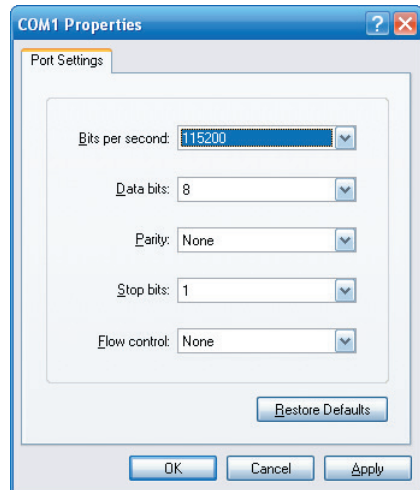


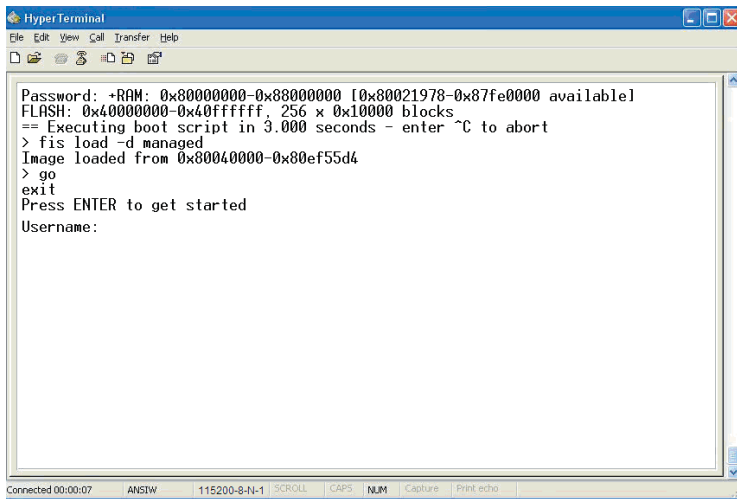
Figure 4-2 COM Port Configuration

4.1. Logging on to Console

Once the terminal is connected to the device, power on the Industrial Managed Switch and the terminal will display "running testing procedures".

Then, the following message asks to log in user name and password. The factory default user name and password are shown as follows and the login screen in Figure 4-3 appears.

```
Username: admin
Password: admin
```



```
HyperTerminal
File Edit View Call Transfer Help
[Icons]
Password: +RAM: 0x80000000-0x88000000 [0x80021978-0x87fe0000 available]
FLASH: 0x40000000-0x40ffffff, 256 x 0x10000 blocks
== Executing boot script in 3.000 seconds - enter ^C to abort
> fis load -d managed
Image loaded from 0x80040000-0x80ef55d4
> go
exit
Press ENTER to get started
Username:
Connected 00:00:07 ANSIW 115200-8-N-1 SCROLL CAPS NUM Capture Print echo
```

Figure 4-3: Industrial Managed Switch Console Login Screen

The user can now enter commands to manage the Industrial Managed Switch. For a detailed description of the commands, please refer to the following chapters.



Note

1. For security reason, please change and memorize the new password after this first setup.
2. Only accept command in lowercase letter under console interface.

4.2. Configuring IP Address via Console

The Industrial Managed Switch is shipped with default IP address shown below.

```
IP Address: 192.168.0.100  
Subnet Mask: 255.255.255.0
```

To check the current IP address or modify a new IP address for the Switch, please use the procedures as follows:

■ Show the current IP Address

1. At the “#” prompt, enter “**show ip interface brief**”.

```
IGS-6325-20T4C4X # show ip interface brief
```

2. The screen displays the current IP address as shown in Figure 4-4.

Interface	Address	Method	Status
VLAN 1	192.168.0.100/24	Manual	UP

Figure 4-4: IP Information Screen

■ Configuring IP Address

3. At the “#” prompt, enter the following command and press **<Enter>** as shown in Figure 4-5.

```
IGS-6325-20T4C4X # configure terminal  
IGS-6325-20T4C4X (config) # interface vlan 1  
IGS-6325-20T4C4X (config-if-vlan) # ip address 192.168.1.100 255.255.255.0
```

The previous command would apply the following settings for the Industrial Managed Switch.

```
IP Address: 192.168.1.100  
Subnet Mask: 255.255.255.0
```

```
IGS-6325-20T4C4X# configure terminal  
IGS-6325-20T4C4X(config)# interface vlan 1  
IGS-6325-20T4C4X(config-if-vlan)# ip address 192.168.1.100 255.255.255.0  
IGS-6325-20T4C4X(config-if-vlan)#
```

Figure 4-5: Configuring IP Address Screen

4. Repeat step 1 to check if the IP address is changed.

■ Store current switch configuration

5. Enter the following command and press **<Enter>** to go back to “#” prompt.

```
# exit
```

```
IGS-6325-20T4C4X(config-if-vlan)# exit
IGS-6325-20T4C4X(config)# exit
IGS-6325-20T4C4X#
```

Figure 4-6: Inputting Exit Command Screen

6. At the “#” prompt, enter the following command and press **<Enter>**.

```
# copy running-config startup-config
```

```
IGS-6325-20T4C4X# copy running-config startup-config
Building configuration...
do not reset or power off the device!
% Saving 5364 bytes to flash:startup-config
```

Figure 4-7: Saving Current Configuration Command Screen

If the IP is successfully configured, the Industrial Managed Switch will apply the new IP address setting immediately. You can access the Web interface of the Industrial Managed Switch through the new IP address.



Note

If you are not familiar with the console command or the related parameter, enter “**help**” anytime in console to get the help description.

5. Starting Web Management

The following shows how to start up the **Web Management** of the Industrial Managed Switch. Note the Industrial Managed Switch is configured through an Ethernet connection. Please make sure the manager PC must be set to the same **IP subnet address**.

For example, the default IP address of the Industrial Managed Switch is **192.168.0.100**, then the manager PC should be set to **192.168.0.x** (where x is a number between 1 and 254, except 100), and the default subnet mask is 255.255.255.0.

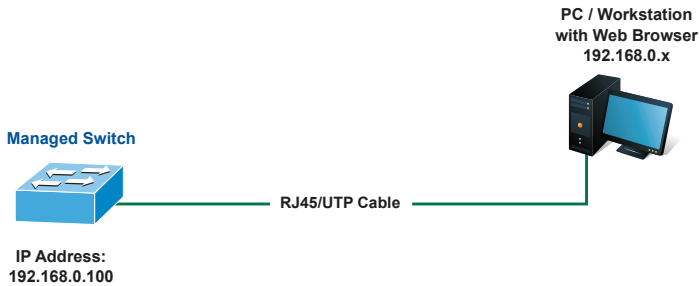


Figure 5-1: IP Management Diagram

5.1 Logging in to the Industrial Managed Switch

1. Use Internet Explorer 8.0 or above Web browser and enter IP address **<http://192.168.0.100>** (the factory default IP address or the one that you have just changed in console) to access the Web interface.
2. When the following dialog box appears, please enter the default user name and password "**admin**" (or the password you have changed via console). The login screen in Figure 5-2 appears.

Default Username: **admin**
Default Password: **admin**

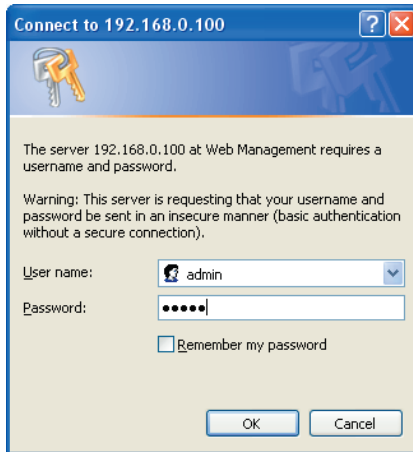


Figure 5-2: Login Screen

3. After entering the password, the main screen appears as Figure 5-3 shows.



Figure 5-3: Web Main Screen of Industrial Managed Switch

The Switch Main Menu is shown on top of the Web page, and the functions are shown on the left to configure the Industrial Managed Switch.



Figure 5-4: Switch Menu

Now, you can use the Web management interface to continue the Switch management or manage the Switch by console interface. Please refer to the user's manual for more.



Note

If you are not familiar with Switch functions or the related parameter, press "**Help icon**" anytime on the Web page to get the help description.

5.2. Saving Configuration via Web

In the Industrial Managed Switch, the running configuration stores in the RAM. In the current version, the running configuration sequence of **running-config** can be saved from the RAM to FLASH by executing save startup config command, so that the running configuration sequence becomes the startup configuration file, which is called configuration save.

To save all applied changes and set the current configuration as a startup configuration, the startup-configuration file will be loaded automatically across a system reboot.

1. Click **Maintenance > Switch Maintenance > Save Startup Config**.



Figure 5-5: Maintenance

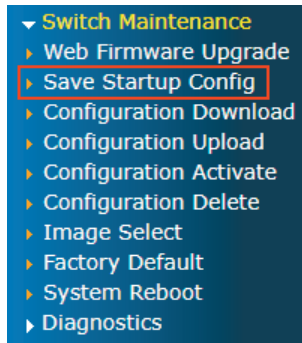


Figure 5-6: Save Startup Config

2. Or you can press the **"Save Configuration"** button.



Figure 5-7: Save Configuration Button

3. Press the **"Save Configuration"** button to save.

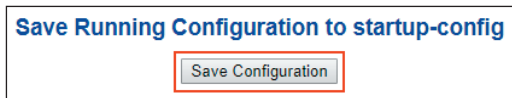


Figure 5-8: Save Configuration

6. Recovering Back to Default Configuration

■ IP address has been changed or admin password has been forgotten –

To reset the IP address to the default IP address **"192.168.0.100"** or reset the login password to default value, press the hardware **reset button** on the rear panel for about **10 seconds**. After the device is rebooted, you can log in the management Web interface within the same subnet of 192.168.0.xx.

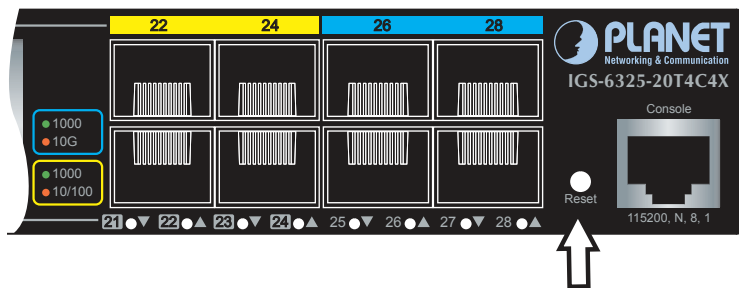


Figure 6-1: IGS-6325-20T4C4X Reset Button

7. Customer Support

Thank you for purchasing PLANET products. You can browse our online FAQ resource and User's Manual on PLANET Web site first to check if it could solve your issue. If you need more support information, please contact PLANET switch support team.

PLANET online FAQs:

<http://www.planet.com.tw/en/support/faq?method=category&c1=3>

Switch support team mail address:

support_switch@planet.com.tw

IGS-6325-20T4C4X User's Manual:

<https://www.planet.com.tw/en/support/downloads?&method=keyword&keyword=IGS-6325&view=3#list>



(Please select the suitable user's manual from the list.)

Copyright © PLANET Technology Corp. 2018.

Contents are subject to revision without prior notice.

PLANET is a registered trademark of PLANET Technology Corp. All other trademarks belong to their respective owners.