

PUF-Powered FIDO2 Security Key for Zero Trust Access

CoreTrust Key

Quick Installation Guide

Table of Contents

1. Package Contents	3
2. Product Overview	4
3. Hardware Introduction	5
4. Getting Started.....	6
5. Troubleshooting	7
6. Safety Information.....	8
Further Information:	9

1. Package Contents

Thank you for choosing PLANET CoreTrust Key. The box should contain the following items:

- CoreTrust Key x 1
- Multi-language QR Code Sheet x 1



Note

If there is any item missing or damaged, please contact your distributor immediately.

2. Product Overview

PLANET CoreTrust Key is a USB security key designed to provide secure and convenient user authentication.

With FIDO2 support, it enhances account security by replacing or strengthening traditional password-based login methods, effectively preventing phishing attacks and credential theft.

Users can simply insert the key into a USB port and touch the sensor when prompted to complete registration or authentication.

3. Hardware Introduction



4. Getting Started

Before using the CoreTrust Key, please ensure:

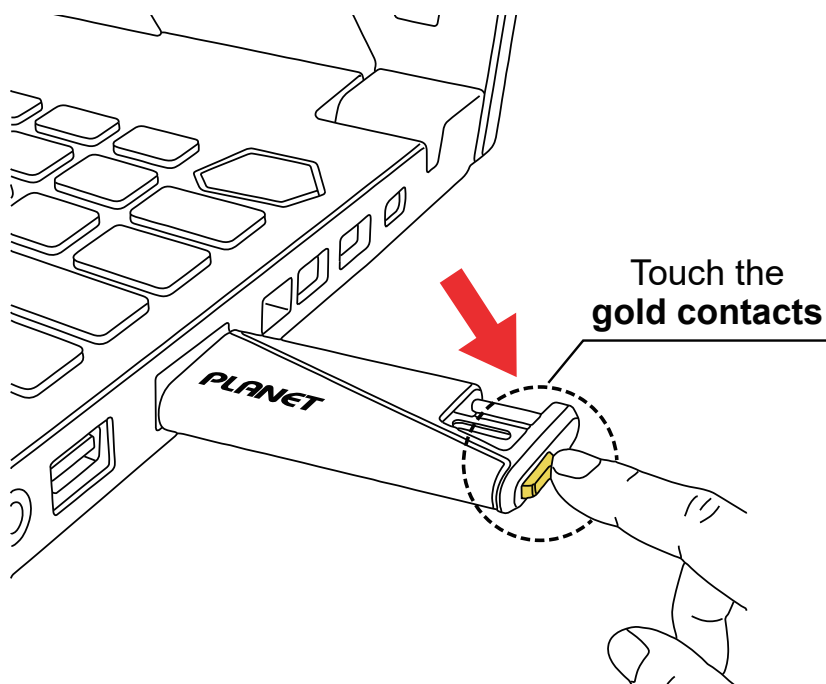
- The device has an available USB port
- The browser or platform supports security key authentication
- The target service supports FIDO2 or security key login

Registering the Security Key

1. Insert the CoreTrust Key into the USB port
2. Log in to your account on the target website or platform
3. Go to **Account Settings > Security Settings**
4. Select **Add Security Key** (or similar option)
5. When prompted, touch the sensor on the key
6. Complete the registration process

Logging in with the Security Key

1. Insert the CoreTrust Key into the USB port
2. Open the login page of the service
3. Enter your account information if required
4. When prompted, touch the sensor
5. Wait for authentication to complete



5. Troubleshooting

The key is not detected

- Reinsert the device
- Try another USB port

Registration fails

- Ensure the service supports FIDO2
- Confirm you are logged in to the correct account

Authentication fails

- Make sure the key has been registered
- Touch the sensor when prompted

6. Safety Information

- Do not bend, drop, or apply excessive force
- Keep away from water and high humidity
- Do not disassemble or modify the product
- Store in a safe place to prevent loss

Further Information:

CoreTrust Key

<https://www.planet.com.tw/en/product/coretrust-key>



If you have further questions, please contact the local dealer or distributor where you purchased this product.

Copyright © PLANET Technology Corp. 2026.

Contents are subject to revision without prior notice.

PLANET is a registered trademark of PLANET Technology Corp.

All other trademarks belong to their respective owners.

EU Representative

PLANET Technology Europe B.V.

Address: Posthoornstraat 11, 3011 WD Rotterdam, NL

Email: eu_rep@planet.com.tw

URL: www.planet.com.tw