

5-Port 10/100/1000T VPN Security Router



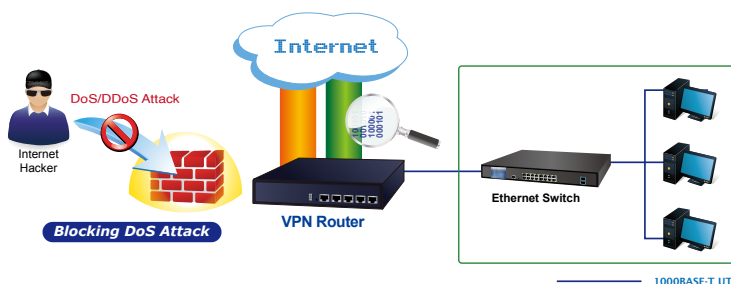
Powerful Network Security Solution

The innovation of the Internet has created tremendous worldwide opportunities for e-business and information sharing. It has become essential for businesses to focus more on network security issues. The demand for information security has become the primary concern for the enterprises. To fulfill this demand, PLANET has launched the VR-100 VPN Security Router, an all-in-one appliance that carries several main categories across your network security deployments: SPI firewall security protection, policy auditing (Content Filtering, VPN Tunnel and MAC/IP Filtering), and easy management (Setup Wizard, DHCP Server and Dashboard). Furthermore, its Dual-WAN Failover and Outbound Load Balance features can improve the network efficiency while the web-based interface provides friendly and consistent user experience.



Excellent Ability in Threat Defense

The VR-100 built-in SPI (Stateful Packet Inspection) firewall and Blocking DoS/DDoS attack functions provide high efficiency and extensive protection for your network. Virtual Server and DMZ functions can let you setup servers in the Intranet and still provide services to the Internet users.



Hardware

- 5 10/100/1000BASE-T RJ45 ports
- 1 undefined Ethernet port (LAN/WAN)
- Dual-WAN function
- 1 USB 3.0 port for system configuration backup and restore
- Reset button
- Desktop installation or rack mounting (optional)
- Fanless design

IP Routing Feature

- Static Route
- Dynamic Route

Firewall Security

- Stateful Packet Inspection (SPI) firewall
- Blocks DoS/DDoS attack
- Content filtering
- MAC/IP filtering
- Blocks SYN/ICMP flooding

VPN Features

- IPSec (Host to Host)/GRE/PPTP server/L2TP/SSL(Open VPN)
- Max. Connection Tunnel Entries: 60 VPN tunnels,
- Encryption methods: DES, 3DES, AES, AES-128/192/256
- Authentication methods: MD5, SHA-1, SHA-256, SHA-384, SHA-512

Networking

- Outbound load balancing
- Failover for dual-WAN
- Static IP/DHCP client for WAN
- Protocols: TCP/IP, UDP, ARP, IPv4, IPv6
- Port forwarding
- DMZ
- SNMP
- DHCP server/NTP client
- MAC address clone
- DDNS: PLANET DDNS, PLANET Easy DDNS, DynDNS and No-IP
- Cybersecurity

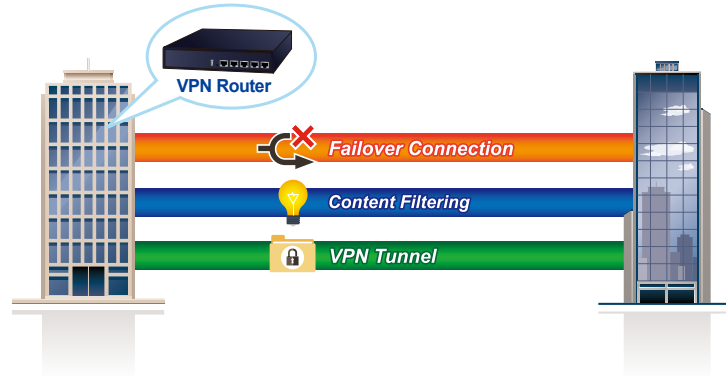
Others

- Setup wizard
- Dashboard for real time system overview
- Supported access by HTTP or HTTPS
- Auto reboot
- PLANET Smart Discovery utility/UNI-NMS supported

Ideal VPN Security Router Solution for SMBs

The VR-100 provides complete data security and privacy for accessing and exchanging most sensitive data, built-in IPSec VPN function with DES/3DES/AES encryption and MD5/SHA-1/SHA-256/SHA-384/SHA-512 authentication, and GRE, SSL, PPTP and L2TP server mechanism. The full VPN capability in the VR-100 makes the connection solid secure, more flexible, and more capable.

The VR-100 supports many popular security features including Content Filtering to block specific URL, MAC/IP filtering, outbound load-balancing and more. Furthermore, it provides higher performance with all Gigabit Ethernet interfaces which offer faster speeds for your network applications. The Gigabit user-defined interfaces flexibly fulfill the network requirement nowadays, and the Dual-WAN interfaces enable the VR-100 to support outbound load balancing and WAN fail-over features.



Cybersecurity Network Solution to Minimize Security Risks

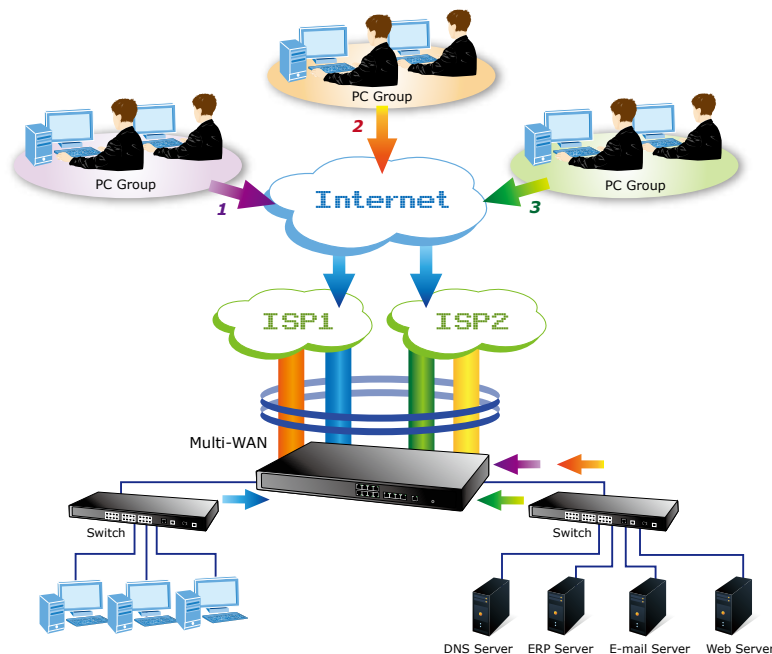
The cybersecurity feature included to protect the switch management in a mission-critical network virtually needs no effort and cost to install. For efficient management, the VR-100 is equipped with HTTPS web and SNMP management interfaces. With the built-in web-based management interface, the VR-100 offers an easy-to-use, platform independent management and configuration facility. The VR-100 supports SNMP and it can be managed via any management software based on the standard SNMP protocol.

Improving Network Efficiency

The VR-100 has link redundancy, Content Filtering and many more functions to make the entire network system better. It is applicable to the small-scale sector (from 10 to 50 people), using a 9-inch desktop design, with five Gigabit ports (WAN/LAN). The VR-100's economical price with complete cable management features make it an inevitable choice for the next-generation office network load balancer.

The VR-100's built-in Content Filtering feature can automatically resolve the IP address corresponding to all. Users' network can be easily managed by just typing the URL of the websites like Facebook, YouTube and Yahoo.

The VR-100 can connect dual WANs with up to two different ISPs. It creates a stable and qualified VPN connection for many important applications such as VoIP, video conferencing and data transmission.

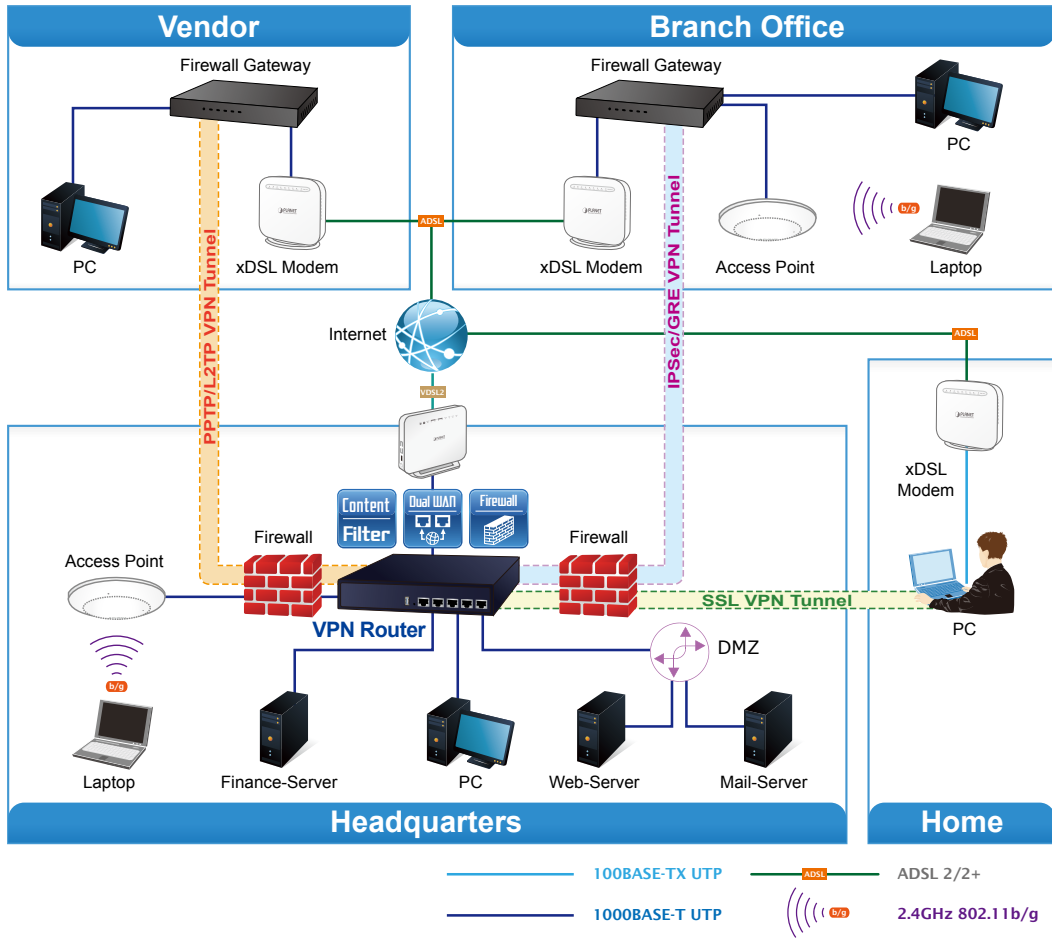


Applications

Ideal VPN Security Router

PLANET VR-100 VPN security router has an SPI firewall with DoS detection. Through the Content Filtering function, it can easily block the websites like Facebook, YouTube, Gmail, etc. With IPSec/GRE/PPTP/L2TP/SSL VPN solutions, the VR-100 provides secured data communication for branches, vendors, and mobile workers with a flexible way to connect back to the headquarters.

The VR-100 connects dual WANs with up to two different ISPs. It creates a stable and qualified VPN connection for many important applications such as VoIP, video conferencing and data transmission.



Specifications

Product	VR-100
Hardware	
Ethernet	5 10/100/1000BASE-T RJ45 Ethernet ports including <ul style="list-style-type: none"> ■ 3 LAN ports ■ 1 WAN port ■ 1 LAN/WAN port
USB Port	1 USB 3.0 port for system configuration backup and restore
Reset Button	Reset to factory default
Thermal Fan	Fanless
LED Indicators	PWR (Green) Internet (Green) LAN/WAN (Green)
Installation	Desktop installation or rack mounting (optional)
Power Requirements	100-240V AC, 1A max.
Power Consumption	13W max.
Weight	0.85kg
Dimensions (W x D x H)	215.2 x 135 x 42.6 mm
Software	
Management	Web browser
Operation Mode	Routing mode
Routing Protocol	Static route: 32 Dynamic route: 4096
NAT Throughput	Max. 900Mbps
Firewall Security	Stateful packet inspection (SPI) Blocks DoS/DDoS attack
Outbound Load Balancing Protocol	Supported algorithms: Weight IPv4, IPv6, TCP/IP, UDP, ARP, HTTP, HTTPS, NTP, DNS, PLANET DDNS, PLANET Easy DDNS, DHCP, SNMP
Content Filtering	MAC filtering IP filtering Web filtering
Log	System Operation Log
Others	Outbound load balancing Failover for dual-WAN Port forwarding DMZ Cybersecurity Dashboard Setup wizard Auto reboot PLANET Smart Discovery utility/UNI-NMS supported
VPN	
VPN Function	IPSec (Host to Host)/GRE/PPTP server/L2TP/SSL (Open VPN)
VPN Tunnels	Max. 60
VPN Throughput	Max. 60Mbps
Encryption Methods	DES, 3DES, AES or AES-128/192/256 encrypting
Authentication Methods	MD5/SHA-1/SHA-256/SHA-384/SHA-512 authentication algorithm
Standards Conformance	
Regulatory Compliance	CE, FCC
Environment Specifications	
Operating	Temperature: 0 ~ 50 degrees C Relative Humidity: 5 ~ 95% (non-condensing)
Storage	Temperature: -10 ~ 60 degrees C Relative Humidity: 5 ~ 95% (non-condensing)
Standard Accessories	
Packet Contents	VR-100 x 1 Quick Installation Guide x 1 Power Cord x 1 Feet Pads x 4

Ordering Information

VR-100	5-Port 10/100/1000T VPN Security Router
--------	---

Accessories

RKE-10B	PLANET Desktop Switch 10-inch Rack Mount Kits
---------	---

Related Products

CS-950	UTM Content Security Gigabit Gateway
ICG-2420G-LTE	Industrial 4G LTE Cellular Gateway with 4-Port 10/100TX
VCG-1500WG-LTE	Vehicle 4G LTE Cellular Wireless Gateway with 5-Port 10/100TX
IVR-100	Industrial 5-Port 10/100/1000T VPN Security Gateway

PLANET Technology Corporation

11F., No.96, Minquan Rd., Xindian Dist., New Taipei City
231, Taiwan (R.O.C.)

Tel: 886-2-2219-9518

Email: sales@planet.com.tw

Fax: 886-2-2219-9528

www.planet.com.tw

PLANET reserves the right to change specifications without prior notice. All brand names and trademarks are property of their respective owners. Copyright © 2019 PLANET Technology Corp. All rights reserved.

VR-100